



SALLAND Engineering
Test Technology Center

DPlus V1.5 Release Notes

Including FAQ for new MSIX installer

Author : Salland Engineering (Europe) B.V.
Version : 1.5
Status : Final

Confidential Information

This document is property of Salland Engineering. No part of it may be reproduced or used in any form or by any means without written permission of the owner. Copyright © 2024 Salland Engineering. All rights reserved.

Table of Contents

1	INTRODUCTION	3
2	RELEASE NOTES	3
2.1	Migration to .NET Core and MSIX	3
2.2	Upgrading to version 1.5.0.....	4
3	FREQUENTLY ASKED QUESTIONS	5
3.1	Popup during installation: 'The app didn't start'	5
3.2	My system does not recognize the MSIX installer file	5
4	ROADMAP – HIGHLIGHTS OF THE NEXT VERSION	6

This document contains important information on several changes to the infrastructure of DPlus. Please refer to chapter 2 for more information and details on the upgrade process.



1 Introduction

Salland Engineering is proud to announce the release of version 1.5.0 of our data analysis tool DPlus.

DPlus has been built for product and test engineers with the latest and greatest software technologies. It features a modern and intuitive, context-driven user interface and the predefined building blocks help you quickly understand complex data analysis.

The new version of DPlus has improved user experience, additional features, enhanced performance, and several reported issues resolved. An important step is the migration from .NET Framework and MSI to .NET Core and MSIX installer. These changes significantly boost overall performance of the tool and make it even more future-proof.

2 Release notes

The list below shows a summary of the most important enhancements and features in version 1.5.0.

- **Major enhancements**
 - Migration from .NET Framework to .NET Core.
 - Future-proof and 5-7 times faster in certain instances.
 - Switched from MSI to MSIX Installer.
 - Overall, the application will run smoother.
 - Startup time 50% reduced.
 - Easier to run DPlus updates in the future.
 - ETS-800 files now generally load under 1 minute.
 - Best case loading improvement up to 180 times.
 - Added a new DPlus project loading system (92% reduced loading time).
 - Best case loading improvements up to 13 times.
- **Features**
 - Added single part merging for CSV and ETS-800 files.
 - Added the reproducibility table for CSV and ETS-800 files.
 - Added a basic offline Shmoo Chart.
 - For the best results try it out with Salland's DTX and Test runner.
*requires 2 parameter columns and a pass/fail column dataset.

For a full list of all enhancements, features and fixes, please refer to the separate Release notes.

2.1 Migration to .NET Core and MSIX

.NET Core and MSIX installer have many benefits, however, it means DPlus version 1.5.0 only supports Windows operating systems on version 10.0.17763.0 and higher. This implies Windows XP, Windows 7 and Windows 8 are no longer supported. For upgrading your version to 1.5.0, please consider the installation steps in the next chapter.

In case you require DPlus to run on an older Windows platform, we suggest you remain at version 1.4.0.x. Please keep in mind that we no longer provide any support on older platforms.



2.2 Upgrading to version 1.5.0

This chapter is only applicable if you have an earlier version of DPlus installed (version 1.4.0.x or lower) and wish to continue upgrading to version 1.5.0.

To install 1.5.0 with the new MSIX installer, please take the following steps:

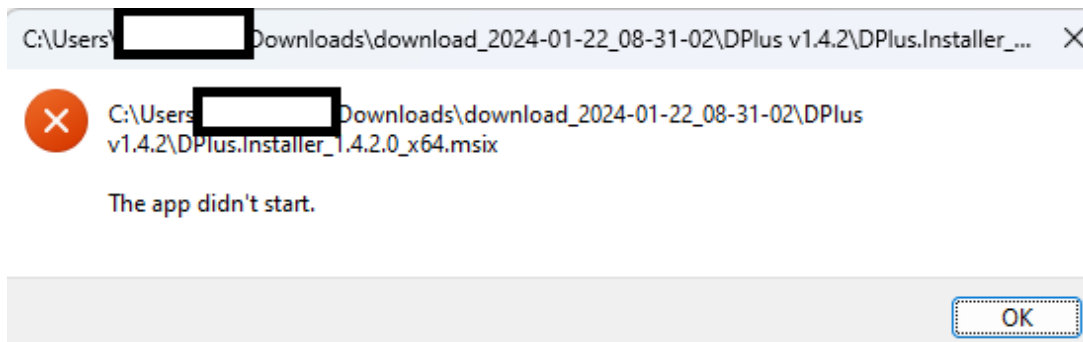
1. Uninstall DPlus completely from your current device.
 - a. Press 'Windows key + S'
 - b. Type in 'Control Panel'
 - c. Go to → Programs and Features
 - d. Find 'DPlus' and uninstall the tool
2. Download the 1.5.0 installer and double click to install
 - a. If you experience any issues in this step, please take a look at the FAQ chapter
3. Start DPlus
4. Agree to the EULA
5. Enjoy the latest version of DPlus



3 Frequently Asked Questions

3.1 Popup during installation: 'The app didn't start'

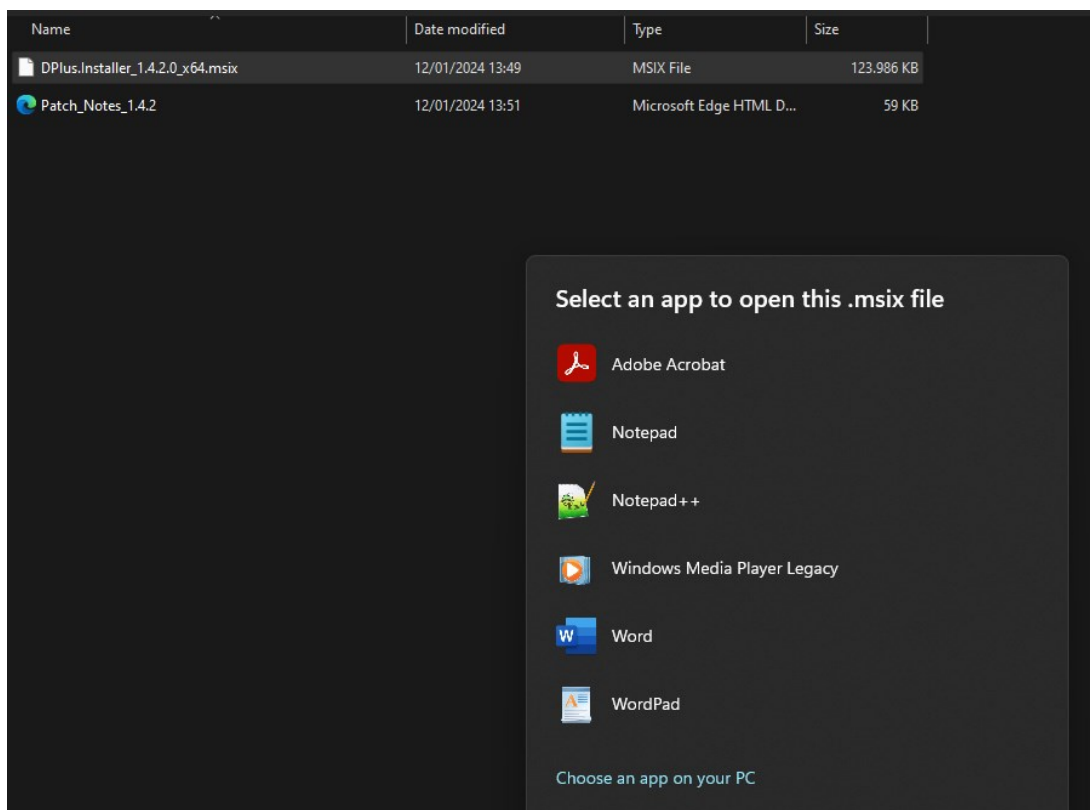
Q: During installation of version 1.5.0. I'm getting the following error/popup:



A: This means your Windows application installer may be broken. To solve this specific issue, please follow the steps explained in the following link: <https://answers.microsoft.com/en-us/windows/forum/all/solved-when-i-try-to-open-any-appx-or-appinstaller/cf339756-1dfb-453f-bbf8-52fbbecffdc5>

3.2 My system does not recognize the MSIX installer file

Q: After downloading the 1.5.0 installer and double-click, the installation will not start:



A: This means your Windows application installer may be broken. Please make sure you have the 'App Installer' installed on your pc: <https://apps.microsoft.com/detail/9NBLGGH4NNS1?activetab=pivot%3Aoverviewtab&hl=en-us&gl=US>



4 Roadmap – Highlights of the next version

For the next release of DPlus, the following enhancements and features are planned:

- Enhancements
 - Aiming to make all charts and processes 10-30% more rapid. Examples:
 - Spt dataset column sorting → 5 million lines → 120+ seconds → 11-18 seconds (~85% time reduction).
 - CSV conversion → QHSU file 23 seconds → 12 seconds (~50% time reduction).
 - Enhance visual smoothness. Example:
 - When zooming in the chart would lag. Now it works smoothly.
- Features
 - Implement chart statistic export.
 - Implement chart statistics with quick report charts.
 - And minor quality of life additions.

Target release date: **July 2024**.

In case you have any specific, product related questions, please feel free to contact dplus@salland.com.

Thank you for using DPlus!

Team DPlus

